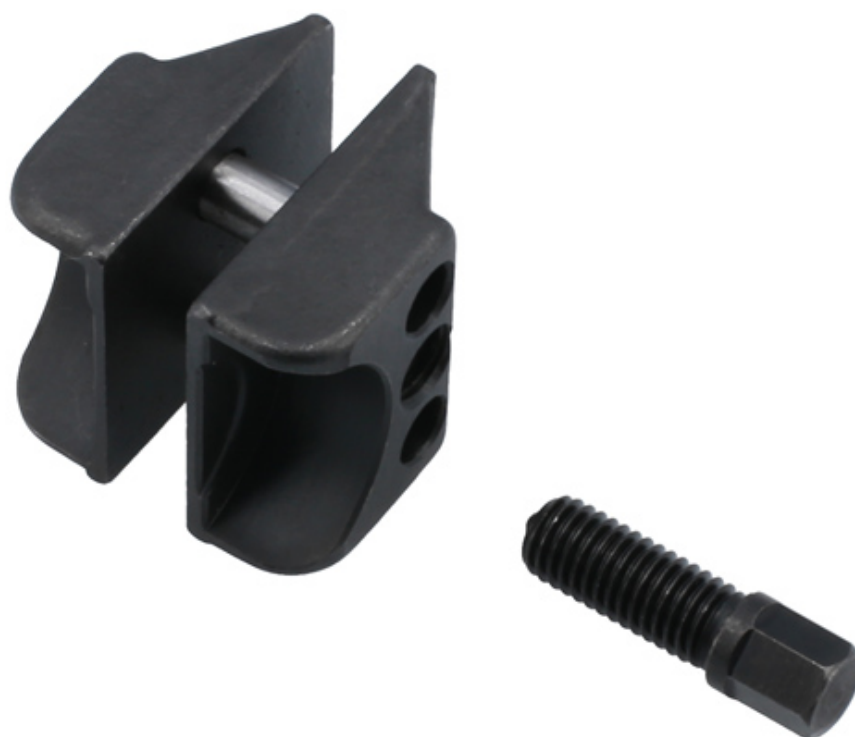


Suspension Split Hub Knuckle Spreader

A compact hub clamp spreader tool designed to allow the suspension split hub to be held open to make the removal and fitting of the suspension strut easier. Suitable for use on various BMW, Citroen, Ford, Peugeot and VW Group models, the double ended design allows it to be used on larger upper split hubs together with lower ball joint split hubs without the risk of damage.



Additional Information

- For removal and fitting of suspension struts whilst leaving the hub on the vehicle (max. opening approx. 15mm)
- Double ended action allows use on both larger upper split hubs and lower ball joint split joints.
- Applications include: Audi, BMW, Citroën, Ford, Peugeot & Volkswagen.
- Manufactured from Chrome Molybdenum, with a carbon steel force screw.
- Use with 10mm hand tools only, MAX torque 13Nm. NOTE: Keep thread clean and lightly lubricated.

<http://lasertools.co.uk/product/8324>

